



Manufacturing - Master Scheduling

Fitrix ERP Manufacturing Module

“Since transitioning to Fitrix, our error rate has dropped by between 30 and 40 percent.”

Brian Grellinger

Director of IT

Doosan Infracore

Master Scheduling is the primary driver to plan and schedule production to support external demand for products. It facilitates detailed entry of production forecasts and uses these forecasts, along with sales order demand, to generate a Master Production schedule. Rough-cut capacity planning is also available, to analyze commitments placed on critical production resources.

The Fitrix MPS application lets you identify which items in your inventory are ‘master-scheduled’. You can then set up sales or usage forecasts for these items, and define a high-level bill of resources. A Master Schedule Generation creates a Production Plan, by netting the forecast and open demand from sales orders against existing inventory levels. In addition to a Production Plan for material, the generation gives top management a high-level analysis of the critical production resources needed to execute the plan, exposing possible bottlenecks well in advance of actual production. Results are can be displayed or printed in a summarized, graphical format.

Master Scheduling

Determine your organizations ability to execute a Production Plan, without being overwhelmed by the details of a Material Requirements or Capacity Requirements planning report.

Fitrix Master Scheduling Module

Features/Function Highlights

Planning Parameters - Sets defaults for MPS generation runs

Period Intervals - Define how the future is to be divided into time periods

Multiple period intervals may be defined

Used to display time-phased materials activity

Resource Master - Defines critical resources used in production

Identifies bottleneck areas which should be controlled

Bill of Resources - List of resources and units needed for master-scheduled items

May be manually entered

May be automatically generated by analyzing Indented bill of material, Indented routing

Maintain Master Schedule - Supports manual entry of firm planned orders

Generated planned orders can be firmed or confirmed

Allows changes in dates and/or quantities for generated planned orders

Master Schedule Generation - Nets forecast and sales orders to on-hand and on-order

Generates planned orders via order policy codes

Forecast Maintenance - Allows entry of item forecasts by warehouse

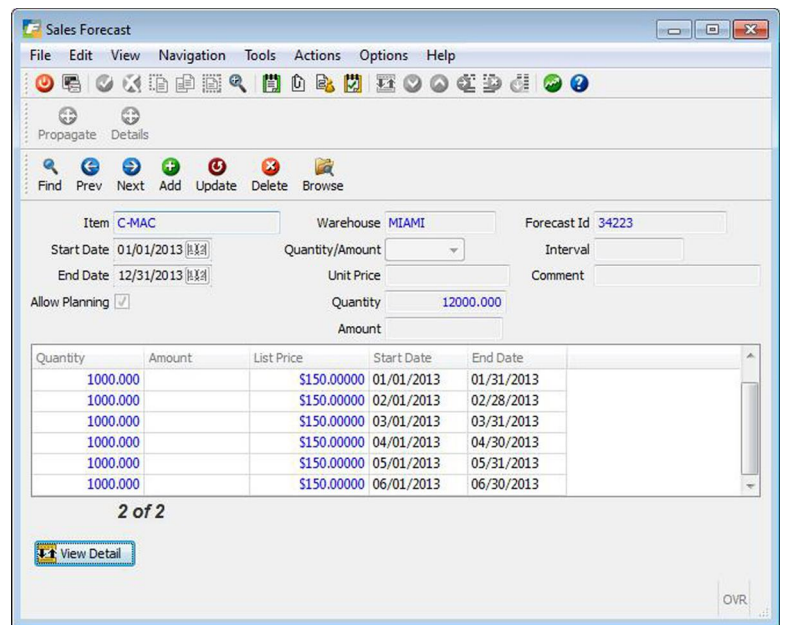
Items can be assigned to groups to inherit forecast characteristics

Forecasts entered by quantity or amount

Forecast by week, bi-week, month, quarter, year

Forecast may be propagated over a given time frame

Allows forecasts to be 'layered' for multiple forecasts in the same period



Available-To-Promise

Displays time phased availability

Indicates first period in which a required quantity is available

Supports Zoom to display details of periodic requirements

Rough-Cut Capacity Inquiry

Compares capacity and load in user-defined period intervals

Over or under-load displayed graphically for easy exception analysis

Details of load displayed with Zoom option

Reports available include:

Master schedule

Rough-cut capacity

Bill of resource

Resource where-used