



---

# Manufacturing - Material Requirements Planning

## Fitrix ERP Manufacturing Module

---

*"In our business, we need information technology to direct our lean manufacturing, so we can quickly deliver a custom product.*

*That's exactly what Fourth Generation's Fitrix ERP empowers us to do."*

T. Brant O'Hair  
President  
O'Hair Shutters, Ltd.

An effective MRP application should ensure materials are available for production and products are available for delivery to customers while maintaining the lowest possible inventory levels. By properly managing the types and quantities of products purchased and produced to meet current and future demands you'll attain high levels of customer satisfaction while reducing cash tied up in potentially obsolete inventory.

The Fitrix MRP application generates planned orders by analyzing demand for master-scheduled and non-master-scheduled items. Bills of material for the planned orders are expanded to analyze requirements for all lower level items, whether produced or purchased. Requirements at each level are netted against on hand inventory and scheduled receipts for active orders, to determine the need to generate additional planned orders.

Generated planned orders may then be reviewed, optionally consolidated, and released for manufacture or purchase. Multiple reports and inquiries are also available to provide a comprehensive view of current and planned production and purchase activities.

### **Material Requirements Planning**

Use Material Requirements Planning to produce and purchase only those items needed to support actual demand and sales forecast.

# Fitrix Material Requirements Planning

## Features/Function Highlights

### Planning Parameters

Set defaults for each MRP generation

### Forecast Group Maintenance

Allows grouping of items with similar demand patterns

Supports default forecast

characteristics, such as monthly, bi-weekly, weekly forecasts, total forecast, or by time period, Forecast by amount, or quantity

### Item Forecast Maintenance

Allows entry of forecasts for an item

Assignment to a group to inherit group forecast characteristics

Forecast entry by amount or quantity

Total forecast for a range of dates, or forecast by Month, Week, Bi-week

Supports generation of an entered forecast amount or quantity over a given period of time

Allows forecasts to be 'layered' for multiple forecasts in the same time period

### Item Requirement Entry

Manual entry of a requirement for an item and due date

### Period Intervals

Define how the future is to be divided into time periods

Multiple period intervals may be defined

Used to display and print future materials activity by time period

### Firm Planned Orders

User can 'firm-up' a planned order

MRP generation will not re-plan a firm order

### MRP Generation

Full generation

Net change generation

Simulation

Separate generation for each planning warehouse

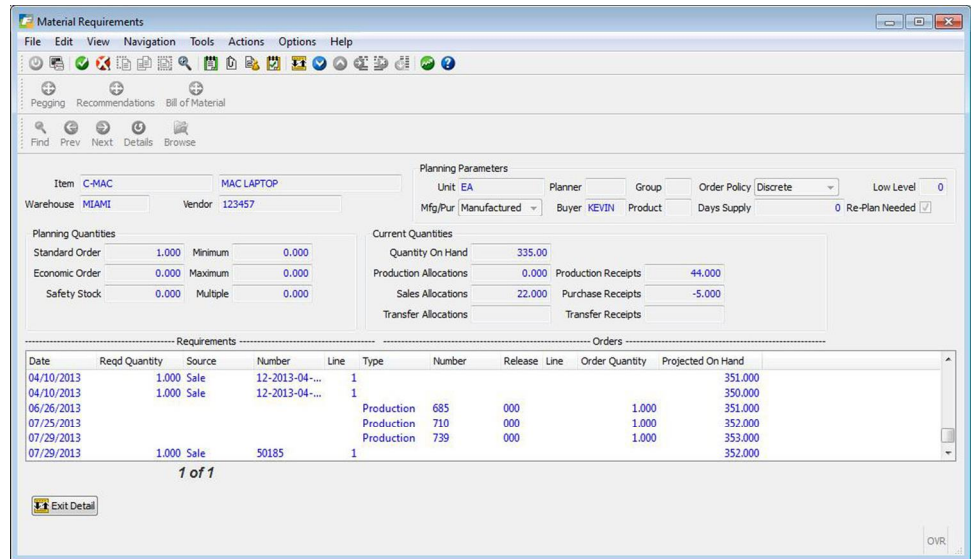
Planning warehouse can use inventory from multiple stocking warehouses

Detail multi-level pegging

Include/exclude safety stock

Include/exclude shrinkage factors

Exclude specific inventory locations



### Order/Review/Release

Review/release production orders

Review/release purchase orders

Create new purchase orders

Add to existing purchase orders

Combine planned orders to a single order

### Review/Accept Recommendations

Analyze recommended changes to scheduled receipts, such as Defer, Expedite,

Cancel

Accept recommendations on-line, by item

### Inquiries

Material requirements

Planned Orders by Warehouse

Planned Orders by Item/Warehouse

## Reports available include:

Planning report

Review/release report

Order recommendation