



Manufacturing - Actual Costing

Fitrix ERP Manufacturing Module

“Our secret sauce is Fitrix software. Because we had it, and were able to customize it to obtain detailed pricing information – and our competitors didn’t and couldn’t – we’ve been able to prosper in a lackluster economy.”

Robert Taylor
CEO
Wireless USA

Actual Costing analyzes actual production costs for an item and compares them to one or more standard costs. Cost variances are presented in summary format, by order, item, or product via inquiry and reporting programs. Detail variances are presented by component and routing step.

Actual Costing is dependent on the Production Order Processing module. The actual production costs are derived from the material issued and the labor reported to production orders.

Actual Costing is integrated with the Labor Processing and Standard Costing modules. The labor time reported on production orders updates actual costs for hours reported with actual employee labor rates and, when a production order is created, its standard or expected costs are captured with the order for later comparison to actual.

Actual Costing

Use Actual Costing to quickly analyze differences in cost from standard orders for the same item.

Fitrix Actual Costing

Features/Function Highlights

Item Variance History

Compares actual cost to beginning of year standard by accounting period and year. Variances displayed in summary by:

Material, Labor, Setup, Overhead, Outside process

Variances displayed in detail by Material usage, Material cost, Setup usage, Setup rate, Setup quantity, Labor usage, Labor rate, Overhead usage, Overhead rate, Outside process usage, Outside process rate, Production scrap.

Product Variance History

Same summary/detail as item variance history.

Display cost comparisons and variances by item product code.

Order Comparison

Order-to-Order Comparison – summary and detail

Order-to-Historical Standard Comparison

Order-to-Future Standard Comparison

Order Cost Detail Inquiry

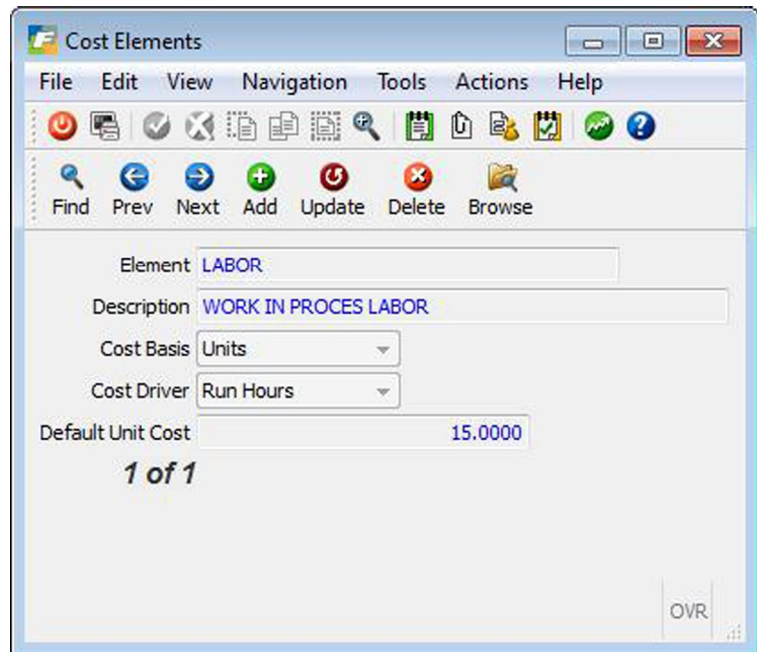
Summary comparison by Cost Element

Detail comparisons by Component

Detail comparison by Routing Step

General Ledger Interface

Posts summarized order variances to General Ledger



Reports available include:

Order Variance Detail Report

- Compares actual versus standard costs by production order
- Compare actual costs to multiple standard costs
- Costs can be analyzed by Order summary, Component details, Routing details
- Variances by component include Material usage & Material cost
- Variances by routing step include Setup usage, Setup rate, Setup quantity, Labor usage, Labor rate, Overhead usage, Overhead rate, Outside process usage, Outside process rate, Production scrap

Order Variance Summary Report

- Print by item
- Print by product
- Comparison to multiple cost types reducing data entry and data entry errors