



Manufacturing - Labor Processing

Fitrix ERP Manufacturing Module

“One of my concerns in acquiring ERP software was the level of attention we would receive – we’re not a big enterprise. I’m glad we selected FitriX. Just like us they emphasize customer service – and provide it.”

Kay Salvesson

Co-Owner GP

Automotive Parts

Labor is a significant expense for most companies and accurate labor reporting is essential for the correct costing of manufactured items that include labor in their routing steps. An effective labor tracking and reporting system needs to provide you with the information you need to appropriately plan your workload, eliminate inefficiencies and maximize margins.

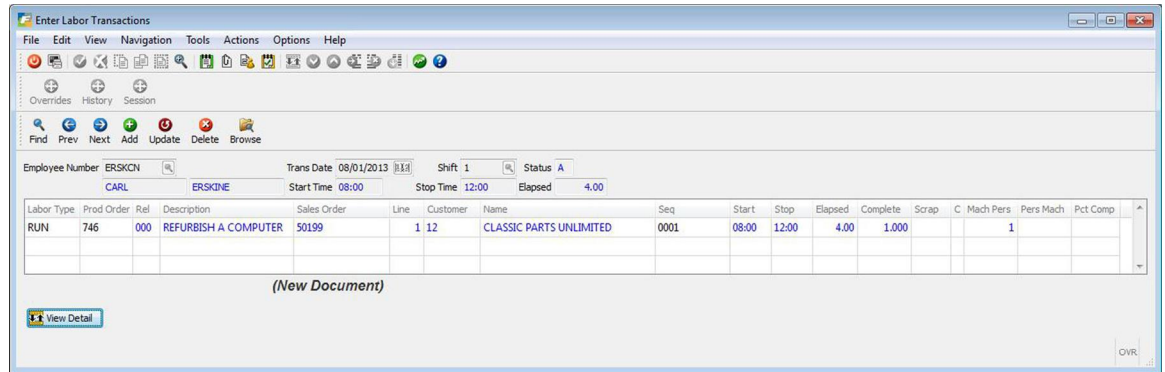
Fitrix Labor Processing collects labor transactions for production orders. Labor is entered for both setup and run hours, and for direct and indirect hours. Order completion statistics are updated real-time. The hours and completion are analyzed for efficiency at multiple levels within the organization. Efficiency inquiries and reports show this performance in summary and detailed formats.

Labor Processing is an application in the Production Management family. It provides a complete picture of the activities that occur and the costs that were incurred in completing production work orders and supports the flow of this information into the general ledger, payroll, and costing modules.

Labor Processing

Use Labor Processing to post hours reported to production orders, to see up-to-date status on work in process.

Fitrix Labor Processing



Features/Function Highlights

Employee Maintenance

Employees can belong to a Department, Work Center, Team, Group, Job class

Labor rates applied to orders by Regular time, Overtime, Premium time

Shift Maintenance

Multiple shifts per physical shift

Early/late start time window

Early/late stop time window

Lunch extraction

Break extraction

Job Class Maintenance

Standard rates used as alternate for labor costing

Labor Type Maintenance

User-defined labor transaction types

Setup or run hours based

Direct or indirect hours based

Labor Transaction Entry

Setup labor

Run labor

Indirect labor

Start/stop time or elapsed time

Completed and scrapped quantities

User-defined percent complete

On-line order update for hours and quantities

Reports available include:

Labor Efficiency Inquiries

- Efficiency by Team, Employee, Work center, Department, Item, Order
- Transactions analyzed by ranges of Resources, Transaction dates, Shifts

Labor Transaction Reports

- Print by ranges of Department, Work center, Machine, Group, Team, Foreman, Employee, Order

Labor Efficiency Reports:

- Efficiency by Department, Employee, Order, Work center
- History by Department, Employee, Order, Work center