



Manufacturing - Product Configurator

Fitrix ERP Manufacturing Module

“Our users didn’t have any problems learning how to use Fitrix quickly and productively. The trainer that we worked with took into consideration how we ran our business, which helped our people absorb and use the things they were taught...”

IT Manager

West Coast

Made to Order

Manufacturer

Product Configurator defines optional features to be selected and included in the production of an item. Features are defined in the form of questions to be answered at the time an order is placed for a ‘configurable’ item. Questions have one or more answers that in turn:

- Include specific additional component items to be included on the production order
- Include specific additional routing steps to be included on the production order
- Activate/deactivate other related questions
- Activate/deactivate other related answers
- Automatically set answers to other related questions

Product Configurator

Configure your made to order product on the fly if needed to comply with your customer’s requirements.

Fitrix Product Configurator

Features/Functions Highlights

Configuration Definition

Define one or more questions (feature), with expanded text, for clear readability

For each question, define one or more answers, with expanded text

For each answer, define one or more responses, as explained above

Configuration Generation

Automatically accessed when a configurable item is placed on a sales order

Automatically accessed when a production order is entered for a configurable item

Prompts the user to answer questions

Allows user to select a previous configuration to auto-fill default answers to questions

Configuration Inventory Inquiry

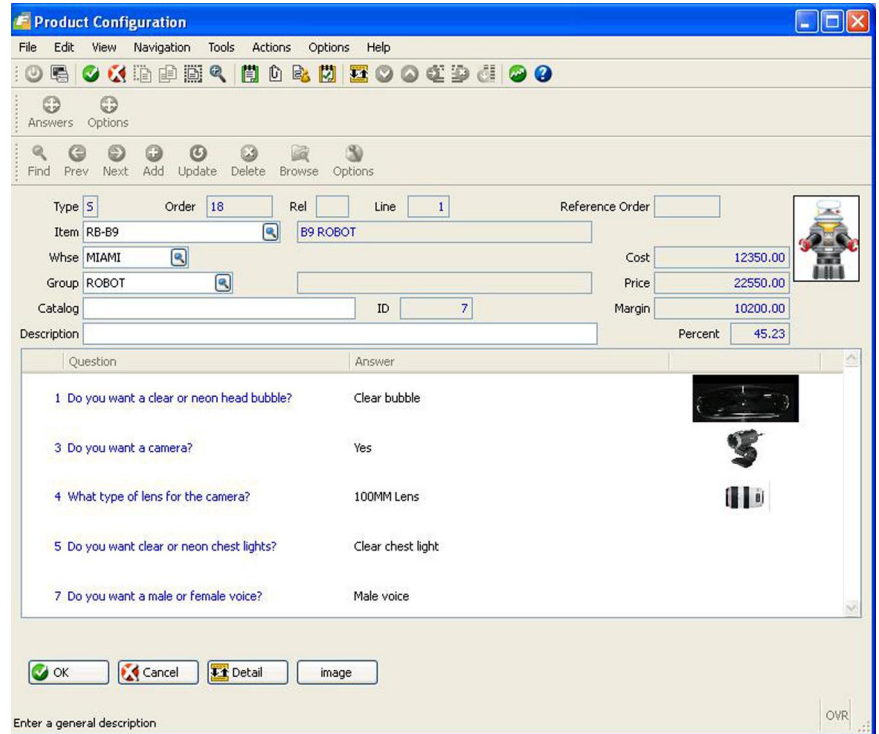
Displays the configuration for an item produced to stock

Configuration Inquiry

Displays the configuration details for any previously configured item

Configuration Detail Report

Prints the configuration definition in expanded format, including questions, answers within questions, and responses within answers



Configuration Simulator

Displays material availability and resource load for a proposed configuration

Useful in a 'what-if' scenario, before an order is placed for a configurable item

Resources analyzed are Work Centers, Departments, Teams, Machines

User-defined period intervals